

SAE Technical Standards Board Rules provide that: "This report is published by SAE to advance the state of technical and engineering sciences. The use of this report is entirely voluntary, and its applicability and suitability for any particular use, including any patent infringement arising therefrom, is the sole responsibility of the user."

SAE reviews each technical report at least every five years at which time it may be reaffirmed, revised, or cancelled. SAE invites your written comments and suggestions.

AS9212

FEDERAL SUPPLY CLASS
5306

NOTICE

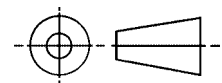
THIS DOCUMENT HAS BEEN TAKEN DIRECTLY FROM U.S. MILITARY SPECIFICATION MS9212, AMENDMENT 1 AND CONTAINS ONLY MINOR EDITORIAL AND FORMAT CHANGES REQUIRED TO BRING IT INTO CONFORMANCE WITH THE PUBLISHING REQUIREMENTS OF SAE TECHNICAL STANDARDS. THE INITIAL RELEASE OF THIS DOCUMENT IS INTENDED TO REPLACE MS9212, AMENDMENT 1. ANY PART NUMBERS ESTABLISHED BY THE ORIGINAL SPECIFICATION REMAIN UNCHANGED.

THE ORIGINAL MILITARY SPECIFICATION WAS ADOPTED AS AN SAE STANDARD UNDER THE PROVISIONS OF THE SAE TECHNICAL STANDARDS BOARD (TSB) RULES AND REGULATIONS (TSB 001) PERTAINING TO ACCELERATED ADOPTION OF GOVERNMENT SPECIFICATIONS AND STANDARDS. TSB RULES PROVIDE FOR (A) THE PUBLICATION OF PORTIONS OF UNREVISED GOVERNMENT SPECIFICATIONS AND STANDARDS WITHOUT CONSENSUS VOTING AT THE SAE COMMITTEE LEVEL, AND (B) THE USE OF THE EXISTING GOVERNMENT SPECIFICATION OR STANDARD FORMAT.

UNDER DEPARTMENT OF DEFENSE POLICIES AND PROCEDURES, ANY QUALIFICATION REQUIREMENTS AND ASSOCIATED QUALIFIED PRODUCTS LISTS ARE MANDATORY FOR DOD CONTRACTS. ANY REQUIREMENT RELATING TO QUALIFIED PRODUCTS LISTS (QPL'S) HAS NOT BEEN ADOPTED BY SAE AND IS NOT PART OF THIS SAE TECHNICAL DOCUMENT.

SAENORM.COM : Click to view the full PDF of as9212

THIRD ANGLE PROJECTION



ISSUED 1999-12

PREPARED BY SAE COMMITTEE E-25

PROCUREMENT SPECIFICATION: NONE

SAE The Engineering Society
For Advancing Mobility
Land Sea Air and Space®
INTERNATIONAL
400 Commonwealth Drive, Warrendale, PA 15096-0001

AEROSPACE STANDARD

BOLT, MACHINE - STEEL AMS 6304, DIFFUSED
NICKEL-CADMIUM PLATED, DOUBLE HEXAGON
EXTENDED WASHER HEAD, .4375-20 UNJF-3A

AS9212
SHEET 1 OF 3

Copyright 1999 Society of Automotive Engineers, Inc.
All rights reserved.

Printed in the U.S.A.

QUESTIONS REGARDING THIS DOCUMENT: (724) 772-8510
TO PLACE A DOCUMENT ORDER: (724) 776-4970

FAX: (724) 776-0243
FAX: (724) 776-0790

SAE WEB ADDRESS: <http://www.sae.org>

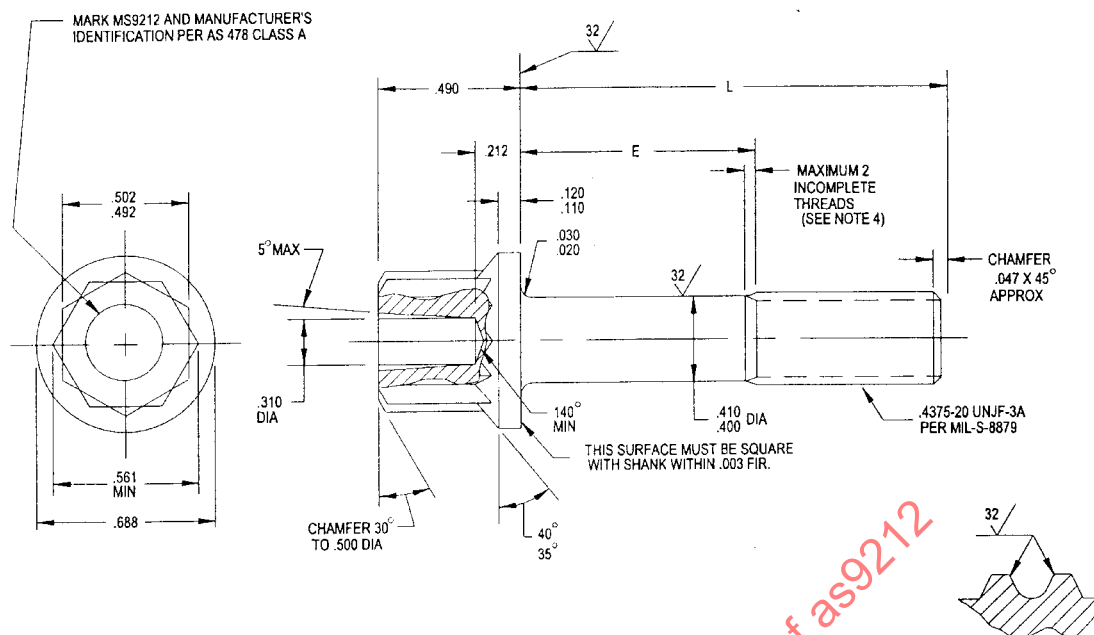


FIGURE I.

TABLE I. PART NUMBERS AND DIMENSIONS

PART NO	L	K	APPROX WEIGHT LB/100	PART NO.	L	K	APPROX WEIGHT LB/100
MS9212-04	.688	.105-.125	5.05	MS9212-25	2.250	1.065-1.125	10.85
MS9212-05	.750	.105-.125	5.28	MS9212-26	2.375	1.190-1.250	11.32
MS9212-06	.812	.105-.125	5.51	MS9212-27	2.500	1.315-1.375	11.79
MS9212-07	.875	.105-.125	5.74	MS9212-28	2.625	1.440-1.500	12.26
MS9212-08	.938	.105-.125	5.97	MS9212-29	2.750	1.565-1.625	12.72
MS9212-09	1.000	.105-.125	6.20	MS9212-30	2.875	1.690-1.750	13.19
MS9212-10	1.062	.105-.125	6.43	MS9212-31	3.000	1.815-1.875	13.66
MS9212-11	1.125	.105-.125	6.67	MS9212-32	3.125	1.940-2.000	14.12
MS9212-12	1.188	.105-.125	6.90	MS9212-33	3.250	2.065-2.125	14.59
MS9212-13	1.250	.125-.145	7.13	MS9212-34	3.375	2.190-2.250	15.06
MS9212-14	1.312	.128-.188	7.36	MS9212-35	3.500	2.315-2.375	15.52
MS9212-15	1.375	.190-.250	7.59	MS9212-36	3.625	2.440-2.500	15.99
MS9212-16	1.438	.252-.312	7.82	MS9212-37	3.750	2.565-2.625	16.45
MS9212-17	1.500	.315-.375	8.05	MS9212-38	3.875	2.690-2.750	16.92
MS9212-18	1.562	.378-.438	8.27	MS9212-39	4.000	2.815-2.875	17.39
MS9212-19	1.625	.440-.500	8.50	MS9212-40	4.125	2.940-3.000	17.85
MS9212-20	1.688	.502-.562	8.73	MS9212-41	4.250	3.065-3.125	18.31
MS9212-21	1.750	.565-.625	8.96	MS9212-42	4.375	3.190-3.250	18.75
MS9212-22	1.875	.690-.750	9.43	MS9212-43	4.500	3.315-3.375	19.31
MS9212-23	2.000	.815-.875	9.90	MS9212-44	4.625	3.440-3.500	19.66
MS9212-24	2.125	.940-1.000	10.38	MS9212-45	4.750	3.565-3.625	20.12