

AS5002

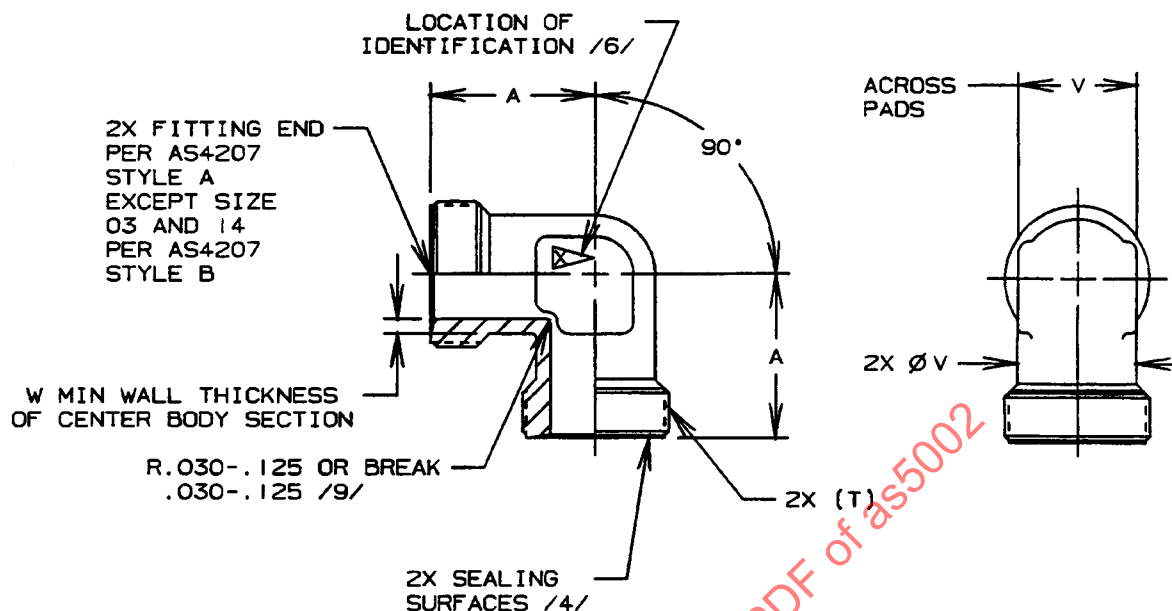
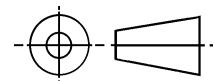


FIGURE 1 - FITTING, ELBOW 90°

TABLE 1 - DIMENSIONS AND WEIGHTS

BASIC NO. AS5002 /15/ SIZE CODE	(NOMINAL TUBE SIZE)	T THREAD PER MIL-S-8879 CLASS A	A	V	W	LB/EA MAX CRES	LB/EA MAX TI
03	.188	.3750-28 UNJS	.575	.360-.377	.055	.0305	.0174
04	.250	.4375-24 UNJS	.617	.360-.377	.060	.0341	.0195
05	.312	.5000-24 UNJS	.653	.423-.440	.060	.0456	.0261
06	.375	.5625-20 UNJS	.704	.485-.502	.060	.0571	.0326
08	.500	.7188-20 UNJS	.824	.547-.565	.065	.0782	.0447
10	.625	.8438-18 UNJS	.955	.673-.691	.070	.119	.0680
12	.750	1.0000-16 UNJ	1.062	.860-.878	.095	.192	.110
14	.875	1.1250-16 UNJ	1.216	1.110-1.128	.105	.372	.213
16	1.000	1.2500-14 UNJS	1.246	1.110-1.128	.110	.335	.191
20	1.250	1.5781-14 UNJS	1.387	1.355-1.380	.110	.496	.283
24	1.500	1.8438-14 UNJS	1.688	1.605-1.630	.130	.824	.471

THIRD ANGLE PROJECTION



CUSTODIAN: SAE G-3/G-3B

PROCUREMENT SPECIFICATION: /5/ MIL-F-85421, MIL-F-85720

**SAE** The Engineering Society  
For Advancing Mobility  
Land Sea Air and Space®  
INTERNATIONAL  
400 Commonwealth Drive, Warrendale, PA 15096-0001

## AEROSPACE STANDARD

FITTING, ELBOW, 90°,  
BEAM SEAL

**AS5002**  
SHEET 1 OF 2

SAE Technical Standards Board Rules provide that: "This report is published by SAE to advance the state of technical and engineering sciences. The use of this report is entirely voluntary, and its applicability and suitability for any particular use, including any patent infringement arising therefrom, is the sole responsibility of the user."

SAE reviews each technical report at least every five years at which time it may be reaffirmed, revised, or cancelled. SAE invites your written comments and suggestions.