

NFPA No. 403

NFPA HISTORICAL

Formerly NFPA
Aviation Bulletin No. 18

1955D1

**SUGGESTED AIRCRAFT RESCUE AND
FIRE FIGHTING EQUIPMENT
FOR AIRPORTS**

1951



Price 50 cents*

**NATIONAL FIRE PROTECTION ASSOCIATION
International**

60 Batterymarch Street, Boston 10, Mass.

National Fire Protection Association

INTERNATIONAL

Executive Office: 60 Batterymarch St., Boston 10, Mass.

The National Fire Protection Association was organized in 1896 to promote the science and improve the methods of fire protection and prevention, to obtain and circulate information on these subjects and to secure the co-operation of its members in establishing proper safeguards against loss of life and property by fire. Its membership includes over a hundred and seventy-five national and regional societies and associations and over thirteen thousand individuals, corporations, and organizations.

A large number of publications are sent to all members as published. These include monthly *Fire News*, the *Quarterly*, standards on fire prevention and fire protection, special reports and bulletins, the *Year Book*, and the *Proceedings* of the annual meetings.

Membership in the National Fire Protection Association is open to any society, corporation, firm or individual interested in the protection of life or property against loss by fire. The valuable engineering and popular literature issued by the Association is available, as issued, to every member. The Association is always glad to send samples of its publications to prospective members upon request.

NFPA Committee on Aviation and Airport Fire Protection

ONE OF 59 TECHNICAL COMMITTEES OF THE ASSOCIATION

This Committee was reorganized in 1946 to replace the NFPA Aviation Committee (organized 1928) and the NFPA Committee on Aircraft Fire Fighting (organized 1944). The present Committee is charged with the responsibility "to develop aeronautical fire protection, including the elimination of fire hazards in aircraft design and operation, the installation of fire protective equipment in aircraft, the control of fire hazards in aircraft maintenance and storage, fire protection for airports and aircraft rescue and fire fighting."

This publication, unlike its predecessor, is drafted as a "Suggested Good Practice" rather than a "Standard" since these recommendations cannot be strictly applied internationally because of varied conditions existing at airports where these suggestions apply. The recommendations given herein are, however, intended to apply internationally and may be considered as the best available, current data on the subject.

Committee on Aviation and Airport Fire Protection

Jerome Lederer, *Chairman,*

President, Flight Safety Foundation, 2 East 64th St., New York 21.

George H. Tryon, III,† *Secretary,*

National Fire Protection Association, 60 Batterymarch St., Boston 10.

EXECUTIVE DIVISION.

Harvey L. Hansberry, *Chairman,*

Civil Aeronautics Administration, Technical Development and Evaluation Center,
P. O. Box 5767, Indianapolis 16.

Col. Edwin E. Aldrin,† Institute of Aeronautical Sciences. (ex-officio)

Ben W. Ashmead, Civil Aeronautics Board, Bureau of Safety Investigation.

Professor Frank K. Bentley, Daniel Guggenheim Aeronautical Laboratory, Massachusetts Institute of Technology.

Gifford T. Cook, Chief Fire and Crash Rescue, U. S. Air Force, Directorate of Installations, Office, Deputy Chief of Staff, Materiel.

Jack Curtis,* Safety Director, United Air Lines.

Allen W. Dallas, Chief Engineer, Air Transport Association.

J. Victor Dallin, Airport Operators Council.

Charles Froesch, Society of Automotive Engineers, Chief Engr., Eastern Air Lines.

F. W. Hancock,† International Civil Aviation Organization, Chief, AGA Section.

Jerome Lederer,† President, Flight Safety Foundation. (ex-officio.)

Harold L. Miner, N.F.P.A. Committee on Flammable Liquids.

John A. Neale, Chief Engineer, National Board of Fire Underwriters.

J. A. O'Donnell,* Supt., Industrial Safety, American Airlines.

Wilfred M. Post, Jr., American Association of Airport Executives.

Kenneth H. Ringrose, National Association of State Aviation Officials.

H. M. Robinson, Underwriters' Laboratories, Inc.

William H. Rodda, Transportation Insurance Rating Bureau.

Wing Cmdr. R. B. Whiting, Department of National Defence (DCEA), Ottawa,

TECHNICAL DIVISION.

J. C. Abbott,* Fire Protection Supt., British Overseas Airways Corporation.

Neill G. Bennett*, Chief Engineer, Gravier Works.

Major John Berry, U. S. Conference of Mayors, Cleveland Municipal Airport.

Harold J. Burke, Fire Extinguisher Manufacturers Association.

E. M. Butler, Airborne Equipment Division, Bureau of Aeronautics, Navy Department.

Joseph Chase,* Lumbermans Mutual Casualty Co.

George W. Clough,* Fire Marshal, Nassau County.

John W. Crowley, Jr.,† National Advisory Committee for Aeronautics.

L. C. Davies, Bureau of Aeronautics, Department of the Navy.

John A. Dickinson, National Bureau of Standards.

R. J. Douglas,* Oklahoma A. & M. College.

H. A. Earsy,* Fire Marshal, United Aircraft Corp.

W. E. Fairbanks,* Aviation Dept., North America Companies.

Milton M. Fischer,* Chief, Mitchel Air Base Fire Department.

D. D. Gordon-Carmichael,* Properties and Safety Assistant, Trans-Canada Air Lines.

Henry E. Halpin, Factory Mutual Engineering Division.

I. J. Hammill, Fire Extinguisher Manufacturers' Association.

J. B. Hartranft, Jr., Aircraft Owners and Pilots Association.

James W. Just, N.F.P.A. Committee on Firemen's Training.

H. A. Klein, Engineering Division, Hq., Air Materiel Command, Wright-Patterson Air Force Base.

W. E. Koneczny, Bureau of Safety Regulation, Civil Aeronautics Board.

Hervey F. Law,* Gen'l Supt. of Airports, The Port of New York Authority.

Dr. L. G. Lederer, Airlines Medical Directors Association.

E. T. Lee,* Safety Director, Eastern Air Lines.

E. E. Lothrop, Secretary, Aviation Technical Service Committee, American Petroleum Institute.

Daniel Mapes, Compressed Gas Association.

J. Brooks B. Parker,* Parker & Co. (Aviation Insurance).

Frank B. Quackenboss,* Rollins, Burdick, Hunter Co. (Aviation Insurance).

D. B. Rees, Chairman, Fire Prevention Committee, Civil Aviation Division, Dept. of Transport (Canada.)

J. P. Risque,* Associated Aviation Underwriters.

J. E. Ritchie, N.F.P.A. Fire Marshals' Section.

E. B. Rumble, National Automatic Sprinkler and Fire Control Association
Roussel G. Smith,* Chief Plant Security, Pan-American World Airways System, Pacific-Alaska Div.

William R. Smith,† Engineering Division, Air Materiel Command, Wright-Patterson Air Force Base.

E. J. C. Williams, Principal Fire Service Officer, Air Ministry, Royal Air Force.

Roger H. Wingate,* Liberty Mutual Fire Insurance Co.

Alternates.

T. S. Duke, National Automatic Sprinkler and Fire Control Association. (Alternate to E. B. Rumble.)

Edward B. Heyl, Civil Aeronautics Board, Bureau of Safety Investigation. (Alternate to Ben W. Ashmead.)

†Non-voting member.

*Serving in a personal capacity in accordance with Par. 11-b-2 of the Regulations on Technical Committee Procedure.

SUB-COMMITTEE ON AIRCRAFT RESCUE AND FIRE FIGHTING

The following Sub-Committee participated in the preparation of these recommendations which were subsequently acted upon by the full Committee:

George H. Tryon, III, Chairman
National Fire Protection Association
60 Batterymarch St., Boston 10, Mass.

J. C. Abbott, Fire Protection Supt., British Overseas Airways Corporation.

Chief James W. Just, NFPA Committee on Firemen's Training.

Gifford T. Cook, Chief Fire and Crash Rescue, Hq., U. S. Air Forces.

Hervé F. Law, The Port of New York Authority.

Jack Curtis, Safety Director, United Air Lines.

Jerome Lederer, Flight Safety Foundation (Ex-officio).

J. Victor Dallin, Airport Operators Council.

Daniel Mapes, Compressed Gas Association.

L. C. Davies, Bureau of Aeronautics, Navy Department.

J. A. O'Donnell, Supt., Ind. Safety, American Airlines.

H. A. Earsy, Fire Marshal, United Aircraft Corporation.

Wilfred M. Post, Jr., American Association of Airport Executives.

Chief Milton M. Fischer, Mitchel Air Force Base Fire Department.

J. E. Ritchie, NFPA Fire Marshals' Section.

F. W. Hancock, International Civil Aviation Organization.

William R. Smith, Engineering Division, Air Materiel Command USAF.

Harvey L. Hansberry, Civil Aeronautics Administration (Ex-officio).

E. J. C. Williams, Principal Fire Service Officer, Royal Air Force, Air Ministry.

SUGGESTED AIRCRAFT RESCUE AND FIRE FIGHTING EQUIPMENT FOR AIRPORTS

(NFPA No. 403)

Section 100—Introduction

101. These recommendations pertain solely to aircraft rescue and fire fighting equipment for airports. They do not include fire protection facilities for airport structures (i.e. hangars, shops, terminals buildings, etc.) although the equipment recommended herein would constitute valuable fire protection for such structures and their contents in many instances.

102. Where aircraft are involved in accidents on the movement area or in the vicinity of an airport, experience has shown that the most severe problems of rescue are encountered when fire occurs. The threat of fire is ever present and occurs very frequently in aircraft accidents. Fire may occur before or immediately following ground impact or at any time during rescue operations owing to the nature of the aircraft fuels and lubricants used, the latent heats of operating aircraft engines and the possibility of sparks being created through disturbance of electrical circuits in the wreckage. The outstanding characteristic of aircraft fires is their tendency to reach lethal intensity within a very short time after outbreak and this not only serves to handicap rescue efforts but also presents a severe hazard to the lives of those involved in the accident and anyone attempting their rescue.

103. The possibility of aircraft accidents is constantly present throughout the extent of air routes. The accident potential is greatest, however, on the movement areas of airports or in their immediate vicinity due to the concentration of air traffic, let down, landing, taxiing, take-off, fueling, and maintenance operations. For this reason, the provision of special means to deal with incidents on and in the immediate vicinity of such movement areas is of primary importance. It is within such limits that there are the greatest opportunities of saving life and property.

104. These recommendations are designed to supplement the National Fire Protection Association publication

entitled "Suggested Standard Operating Procedures, Aircraft Rescue and Fire Fighting (NFPA No. 402) as adopted by the Association and made available to the public.*

105. Aircraft rescue and fire fighting on the movement area of an airport should be under the administrative control of airport management, whether a governmental agency, a private corporation, or an individual, and irrespective of how such activities are financed and/or organized. Airport management should also have administrative duties in connection with aircraft rescue and fire fighting within the reasonably accessible environs of the airport movement area where there is no conflict with the administrative jurisdiction of suitably organized and equipped public protective agencies. A prearranged high degree of mutual aid (joint defense measures) is desirable between airport rescue and fire fighting organizations and any public protective agencies serving the immediate vicinity. An "area emergency plan" should be established and airport management should provide educational instruction on the special problems and techniques associated with aircraft rescue and fire fighting to cooperating public agencies.

106. These recommendations are suggested for international application. The aeronautical terminology used is defined in Appendix C.

Section 200—Basis for Recommendations

201. To provide a workable index useful in determining the minimum amounts of fire extinguishing agents for aircraft rescue and fire fighting, aircraft are grouped into the following weight categories:

Aircraft Maximum Gross Weight Ranges	Approximate Fuel Capacity Ranges†	Normal Number of Occupants
Under 3,000 lbs.	Under 70 gals.	1 to 4
3,000 to 8,500 lbs.	70 to 150 gals.	4 to 6
8,500 to 15,000 lbs.	150 to 500 gals.	5 to 10
15,000 to 26,000 lbs.	500 to 1,000 gals.	10 to 25
26,000 to 50,000 lbs.	1,000 to 2,000 gals.	25 to 40
50,000 to 90,000 lbs.	2,000 to 4,000 gals.	30 to 45
Over 90,000 lbs.	Over 4,000 gals.	Over 45

All aircraft do not conform precisely to the above char-

* Copies available from the NFPA Executive Office, 60 Batterymarch St., Boston 10, Massachusetts, U.S.A. (\$.25)

† U. S. gallons are used in this table.

acteristics in the weight groupings indicated, but they do apply generally (see Appendix "D"). Also, all aircraft which do conform to the characteristics in the weight groupings do not have identical crash impact fire dangers. (For example, aircraft with fuel cells well segregated from ignition sources and with properly designed plumbing generally have less impact fire dangers than other aircraft in the same category which lack this design feature. Similarly, rescue opportunities in aircraft in a given weight category might vary with the nature of the installed exit facilities provided.) The utility of this index is thus subject to discriminating use until experience justifies more accurate definition of rescue and fire fighting requirements based on actual impact fire hazard characteristics of individual aircraft, and, as applicable, of individual models of the same aircraft.

202. It should be clearly understood that it is not anticipated that the total fuel capacity of each aircraft will be involved in fire following each and every accident. The index in paragraph 201 merely indicates the relative fire danger from fuel exposure and the total potential fuel capacities which might be involved. While the fuel capacity of an aircraft generally governs the potential magnitude of the fire risk, it should also be clearly understood that lubricating oils, flammable hydraulic fluids, alcohol, combustible fabrics or cargoes, magnesium parts, etc., might provide the initial fuel or contribute significantly to fire spread. Conversely, installed fire protection devices designed to operate on impact might eliminate or lessen the magnitude of the potential fire hazard.

203. *The chief purpose of providing such rescue and fire fighting equipment is to save the lives of passengers and crew. It is most often necessary, particularly in transport category aircraft, to effect complete control or extinguishment of fire to ensure such rescue. The suggested equipment recommended herein is promulgated upon this basic concept.* Passenger and crew capacities are generally related to the gross weight of the aircraft (see paragraph 201) and thus are related to the other features useful in determining the extinguishing agents desired.

204. The quantities of fire extinguishing agents recommended should be related to the heaviest weight category of aircraft normally using the facility. (Illustration: An airport having DC-3 operations with only one or two DC-4

landings a day should normally be equipped to handle aircraft in the 15,000-26,000 lb. category. Prudent operators should, however, provide auxiliary facilities for a possible DC-4 emergency.)

205. The number of recurrent operations per day influences the assignment of personnel needed to man the equipment, but, basically, the type of protection provided should be in accordance with paragraph 204. This is formulated on the concept that the life safety of those aboard one aircraft are no less important than those on any other similar aircraft, regardless of the frequency of operations or exposures to accidents.

206. It is realized that the cost of providing the suggested scales of rescue and fire fighting facilities might be considerable and that, in the case of remote airports, the cost may be materially more than at those located within zones where public fire protection is afforded. The scale of the facilities provided, therefore, may have to be related to the revenue produced by the air traffic and the overall requirements for such specialized fire protection in each situation. The economics of the protection must not ignore however, the life protection factors, the airline carrier investments at risk, the auxiliary fire protection services rendered by the equipment for structural and other airport requirements, and the loss of revenue resulting from declines in passenger patronage due to unfavorable accident experience.

207. Heavy air traffic conditions may require an increase in the scale of facilities, especially where parallel runways are provided and where runways are widely spaced and exceed 8,000 ft. in length.

208. In view of the lack of uniformity in the size and type of rescue and fire fighting equipment in use throughout the world, the most convenient means of recommending protection for aircraft rescue and fire fighting is in terms of the minimum amounts and discharge rates of the desired extinguishing agents for initial operations. In addition, certain objective and functional specifications may be given for equipment design and operation which may apply to existing or future designs of vehicles. (See Section 300.)

209. In order to establish the types of extinguishing agents recommended for aircraft rescue and fire fighting, it is desirable to consider certain basic principles concerning

the various agents available for the purpose. These may be summarized as follows:

- (a). Water, used as water spray (water "fog") or otherwise, is the best universally available cooling agent for the control of fire and for personnel protection from heat. The extinguishing ability of water and water spray, however, is poor on large gasoline based fires of the type usually encountered in accidents involving aircraft weighing over 15,000 lbs. gross weight (over 500 gallons (U.S.) of fuel capacity) because of its limitations in finalizing extinguishment. It is thus not recommended as the sole agent available for this type of fire fighting. Water spray is, nonetheless, so very useful for the protection of trapped personnel in aircraft accidents involving fire and for the protection of rescue and fire fighting personnel from severe radiant heat conditions, that its availability is recommended. This is usually entirely practical through the use of adjustable valves and nozzles on equipment designed essentially to dispense foam. The use of straight water streams discharged at high velocity is not recommended for aircraft rescue and fire fighting except where it is desired to "sweep" fuel spills from hazardous areas. Wetting agents added to water improve its extinguishing efficiency on flammable liquid based fires but care must be exercised to assure compatibility if foam is a supplementary agent.
- (b). Foam used for aircraft rescue and fire fighting is an aggregation of small bubbles of lower specific gravity than oil or water and shows tenacious qualities for covering and clinging to vertical or horizontal surfaces. It cools hot surfaces by its high water retention ability and flows freely over a burning liquid surface to form a tough, air-excluding blanket that seals-off volatile flammable vapors from access to air or oxygen. Good quality foam is dense and long lasting, resisting disruption due to wind and draft or heat and flame attack and is capable of resealing in event of mechanical rupture of an established blanket. There are two kinds of foam:
 - (1). Chemical Foam—made by the reaction of

an alkaline salt solution (usually bicarbonate of soda) and an acid salt solution (usually aluminum sulphate) to form a gas (carbon dioxide) in the presence of a foaming agent which causes the gas to be trapped in bubbles to form a tough, fire resistant foam.

- (2). Mechanical Foam (Air Foam)—made by the addition of a special foam stabilizer (a liquid) to water to make it capable of foaming in the presence of air which is incorporated by the mechanical action of jets in fixed foam maker or playpipe.

Mechanical foam (air foam) is more suitable for aircraft rescue and fire fighting because of advantages in speed of operation, reduced manpower requirements and ease of carrying the needed basic ingredient. The most serious limitation of foam for aircraft rescue and fire fighting is the time element involved in its application (usually best accomplished by the deflection of foam off the fuselage and working outwards to form a blanket over flammable liquid spills). To be effective for the primary mission of rescue, rapid discharge facilities must be available to permit application of large quantities in the shortest possible time. The hazards of disrupting established foam blankets by turbulence, water precipitation and heat baking can be overcome by firemen's training and the purchase of a good quality of the basic foam ingredient.*

- (c). "Fog-foam" used for aircraft rescue and fire fighting is the commonly used name applied to foam discharged at relatively high pressures in water solution through specially designed spray nozzles. It has excellent cooling effects and measurably increases the extinguishing efficiency of plain water spray (water "fog"). With its high water content (which is reflected in its cooling ability), there is, however, a sacrifice in its smothering quality as compared with "ordinary" foam (see paragraph 209b.) and, hence, in the permanency of the foam blanket formed by its application on flammable liquid spills. Quantity application of

* See "NFPA Standards for Foam Extinguishing Systems" (NFPA No. 11) for tests of mechanical (air) foam quality.

"fog-foam" on an aircraft fire at a high rate of discharge provides for effective extinguishment and unexcelled cooling within the limitations imposed on any single agent method now available.

- (d). Carbon dioxide used for aircraft rescue and fire fighting provides a most rapid means of fire extinguishment on flammable liquids when dispensed adequately over the fire area in sufficient quantity at a sufficiently high rate of discharge. As an inert gas, its thorough penetration to otherwise inaccessible areas is particularly significant and its speed of action is tremendously important to the primary mission of rescue. The cooling effect of carbon dioxide is not always sufficient to reduce heated metal parts below the ignition temperatures of flammable liquid vapors liable to persist in the area. This introduces the hazard of reignition of such exposed flammable vapors upon diffusion of the inerting carbon dioxide gas. The permanency of extinguishment may also be affected by atmospheric conditions (particularly wind direction and velocity) but firemen's training has a great influence on this contingency.
- (e). Dry chemical (gas expelled) used for aircraft rescue and fire fighting, like carbon dioxide, should provide a most rapid means of fire extinguishment on flammable liquids when dispensed adequately at a sufficiently high rate of discharge and in a sufficient quantity. Its use as a medium for aircraft rescue and fire fighting has not proceeded beyond experimentation at this time (December 1950) but its efficiency as an extinguishing agent on smaller similiar fires is well recognized. The residue deposits of dry chemical introduce problems of compatability with some types of foam under fire conditions requiring experimentation at point of use to assure that any subsequent foam application will not deteriorate because of chemical reactions. Reasonable compatability of foam and dry chemical has been secured experimentally to date but much depends on the chemical and physical properties of the particular agents involved. The permanency of extinguishment may be affected by atmospheric conditions (particularly wind direction and velocity) but firemen's training has a great influence on this contingency.

210. It should be noted from the information in paragraph 209 that no single agent meets all the necessary qualifications for speedy and permanent aircraft fire extinguishment. A combination of agents is desirable, especially for aircraft weighing over 15,000 lbs. gross weight (over 500 gals. of gasoline). *The selection of carbon dioxide and foam (with option to "fog-foam" or water spray) is recommended as the most effective means currently available for aircraft rescue and fire fighting. This combination provides for rapid blanketing, effective cooling, and permanent extinguishment assuming adequacy of agent supply and discharge facilities.* The use of dry chemical in lieu of carbon dioxide may prove feasible but, until reports are available and evaluated on experimentations made in its large scale use, not even preliminary recommendations can be given. For aircraft weighing under 15,000 lbs. gross weight, the above combination is likewise recommended but recognition is given to the potential successful utilization of foam, "fog-foam" or carbon dioxide singly by virtue of the limited fuel exposures liable to be involved. On certain occasions it might also be possible to extinguish incipient fires on larger aircraft with a single agent attack but the availability of the two agents is a minimum recommended safeguard.

211. The types and quantities of extinguishing media recommended in Table 1 are based on the finding indicated in paragraph 210 and on research, large scale tests and actual experience studies in the United Kingdom and the United States as related to the particular requirements of civil aircraft operations. The quantities recommended are the minimums to be immediately available for direct application.

212. The presence of magnesium alloys in aircraft structures introduces an additional problem to fire extinguishment in cases where this metal becomes involved in an aircraft fire. None of the agents available for bulk application (see paragraph 209) is capable of securing positive extinguishment of burning magnesium under all conditions and experience proves that a definite reignition hazard to flammable liquid vapors exists from burning magnesium following almost complete control over other ignited materials. The only practical methods of overcoming this difficulty are: (1) by the removal of the magnesium from the fire area where accessible and identifiable; (2) by the localized application of special magnesium extinguishing agents or covering with sand or dirt; or (3) by cooling with

Table No. 1
Suggested Minimum Amounts of
Extinguishing Agents and
Minimum Personnel
for
Aircraft Rescue and Fire Fighting Operations
Graded According to Aircraft Weight Categories

Aircraft by Gross Weight Categories (See Par. 201)	Minimum Quantities Extinguishing Agents (See Pars. 301-306)		Minimum Personnel on Duty (See Pars. 314-316)		Typical Civil Aircraft in Weight Category (See also Appendix "D")
	Water in U.S. Gals (For Foam Production)	Carbon Dioxide in Pounds	Full Time	Trained Auxiliaries	
Under 3,000 lbs.	300 gals. and	300 lbs.	1	2	Piper Super Cub, Cessna 140, Beech Bonanza, Navion, etc.
3,000-8,500 lbs.	400 gals. and	500 lbs.	1	2	Grumman Widgeon Cessna 190, deHavilland Beaver, etc.
8,500-15,000 lbs.	500 gals. and	750 lbs.	1	4	Beech D-18S, Grumman Mallard, Short Sealand, etc.
15,000-26,000 lbs.	750 gals. and	1,200 lbs.	3*	4	Douglas DC-3, Beech Model 34, Lockheed Lodestar, etc.
26,000-50,000 lbs.	1,500 gals. and	2,000 lbs.	4*	4	Convair Liner, Martin 202, Douglas Super DC-3, etc.
50,000-90,000 lbs.	Either 2,500 gals. and 4,000 lbs.		4-5*	6	Douglas DC-4, "North Star" Handley-Page Hermes IV, etc.
	or 3,500 gals. and 2,000 lbs.				
Over 90,000 lbs.	Either 3,500 gals. and 4,000 lbs.		5-6*	6	Douglas DC-6, Lockheed Constellation, Boeing Strato- cruiser, etc.
	or 4,500 gals. and 2,000 lbs.				

* Indicates at least one driver for each piece of apparatus plus a Chief of Emergency Crew. See paragraph 316 for further details.

Note 1: Maximum discharge period for dispensing the total amounts of both agents should not exceed 2½ minutes for each. See paragraph 302 for further details.

Note 2: As new mediums are developed consideration will be given to modification of this Table.

water or "fog foam" (this process liable to temporarily intensify flame spread until the application is sufficient to produce the degree of cooling required).*

Section 300—Recommendations

301. Table No. 1 indicates the quantities of carbon dioxide and water (for conversion to foam) recommended as the minimum amounts for immediate application, graded according to aircraft weight categories (see paragraph 201) and in accordance with the findings indicated in paragraph 210 and 211.

302. It is recommended that equipment dispensing these agents be so designed that the total amounts of water (dispensed as foam, "fog-foam" or water spray) and the total amount of carbon dioxide indicated in Table No. 1 be discharged within 2½ minutes maximum time so as to afford the desired rates of discharge considered essential to fire extinguishment or control.

303. Table No. 1 applies to all airports other than those where extremely low temperature conditions exist over extended periods of time necessitating special safeguards for the effective utilization of mobile aircraft rescue and fire fighting equipment.

304. The minimum amounts of water (for conversion to foam) and carbon dioxide suggested in Table No. 1 are based on their being immediately available for application from properly designed and equipped mobile aircraft rescue and fire fighting equipment available at the airport (see paragraph 306), and manned by thoroughly trained and equipped aircraft rescue and fire fighting crews (see paragraph 316). The minimum agent quantities suggested in Table No. 1 presume the existence of additional water supply facilities (mobile or otherwise) and any special chemicals upon which dependence is placed for fire extinguishment to make possible continuing rescue and fire fighting operations for a reasonable period of time after the discharge of agents carried as the initial minimums.

305. The amount of water shown in Table No. 1 for each weight grouping is the minimum considered desirable for fire extinguishment based on conversion to foam and when the foam is applied in conjunction with carbon dioxide (see paragraph 210). The gallonage is expressed in gallons of

* See also "NFPA Handbook of Fire Protection," 10th Edition, Pages 418-420.

water (not in gallons of foam) and the mechanical foam production contemplated is based upon an expansion ratio of from 5 to 1 to 10 to 1. When the water supply is used for other than foam production, the extinguishing efficiency or effectiveness should equal that of the foam method.

306. The amount of carbon dioxide shown in Table No. 1 for each weight category is the minimum considered desirable for fire extinguishment when applied in conjunction with foam (see paragraph 210). Other inert gases (or agents which produce inert gases when applied to fire) may be utilized following a determination of their extinguishing efficiency and effectiveness and assuring reasonable compatibility with foam. When other such agents are used, however, their extinguishing efficiency or effectiveness should equal that of comparable amounts of carbon dioxide.

307. Aircraft rescue and fire fighting equipment should be mobile and the vehicles provided for conveying the extinguishing media quickly to the scene of the accident should be constructed to comply generally with the following objective functional specifications:

- (a). The optimum carrying capacity of a vehicle and its gross weight will depend upon various chassis and body design features. In this respect, *vehicle capacity and gross weight should be compatible with and without prejudice to the performance characteristics specified in sub-paragraph (b), below.* This criteria will determine the suitability of the vehicle for the duties described. In this connection, it should be noted that with the larger type aircraft (particularly aircraft weighing over 15,000 lbs. gross weight) it is desirable to have multiple units available to attack a fire from more than one point or quarter.
- (b). Design and construction of the vehicle should be suitable for carrying its full load at relatively high rates of speed over all types of roads, trails, open and rolling country under all reasonable conditions of weather and terrain on the movement area of the airport and in the immediate vicinity thereof. More specifically, the vehicle should have the following characteristics:
 1. A cruising speed of at least 50 miles per hour on paved roads.
 2. Acceleration such that the vehicle, fully

- loaded, is able to achieve 50 miles per hour within 45 seconds or in a distance of 1,400 feet, without engine preheating and with ambient temperatures above 45° F. (7° C.).
3. Braking should permit the vehicle to be brought to a stop in 20 ft. when travelling 20 miles per hour, fully loaded and manned, on dry pavement.
 4. Detailed vehicle traction and flotation specifications cannot be issued on a blanket basis as they will vary with the terrain conditions existing or liable to exist at the individual airports at which the vehicle is in service. The importance of using proper tire sizes, treads and inflations cannot be overemphasized. Standard commercial vehicles may be used satisfactorily at some airports but at others terrain conditions may require that special attention be given to vehicle flotation and traction. Flotation and traction on soft soil is best obtained by the use of low tire inflations. The tire load and inflation tables in Appendix "A" were supplied through the courtesy of the Tire and Rim Association (U.S.A.) as a guide in choosing adequate tire sizes, where terrain conditions indicate the need for low pressure (25 psi) inflations. It should be noted that the use of low pressures decreases tire loads requiring larger-sized tires and greater body clearances than is customarily provided on standard commercial vehicles. Inflations lower than 25 psi are not recommended since their use requires some provisions for preventing the tires from creeping on the rims. If the vehicle service requirements are over such terrain that inflations need not be as low as 25 psi, tire sizes can be reduced by the use of higher inflations and tire durability should be satisfactory providing there is adherence to standard truck load-inflation tables.* Great care must be used to avoid the danger of sidewall injury and pinching of tubes which may occur with under-inflated tires.

* Full details available and published by the Tire and Rim Association, Akron, Ohio.

5. Angles of approach and departure should be not less than 30 degrees and center clearance not less than 15 degrees, except where only flat terrain exists within the normally accessible environs of the airport.
 6. Vehicle motor horsepower requirements, transmission power ratios and chassis design should be governed by vehicle weight, the acceleration and speed requirements, and by the flotation specifications engineered for the terrain conditions at the airport being served. Normally, front and rear axle drive is desirable with positive four-wheel drive recommended for all difficult terrain where the need may be illustrated by actual test runs.
- (c). All essential vehicles (those designed to reach the scene first and the major units) should be provided with two-way radio facilities to assure communication opportunities with Airport Control.
 - (d). Overall vehicle dimensions should be within practical limits having regard to local standard highway practices, width of gates and height and weight limitations of bridges. Vehicle length and height should take into consideration garaging facilities.
 - (e). Simplicity of vehicle operation (particularly operation of extinguishing agent discharge facilities) is highly important because of the time restrictions imposed upon successful aircraft rescue and fire fighting operations and the need to keep to the minimum the crew required. It must be remembered that fast blanketing of the fire area is essential. Hand hose lines are thus not enough for large aircraft fires; elevated turrets or horns having large discharge capacities are needed to quickly blanket the fire and knock down the bulk of the flames. Hand lines are used essentially for covering the rescue party, for maintaining fire control in the rescue entry area, and for spot cooling of the fuselage to avoid heat suffocation to trapped occupants.
 - (f). Accessory equipment desirable includes:

- (1). Manual Cutting, Opening and Access Tools:
Large and small axes specially designed for
piercing metallic fuselage skin surfaces
(non-wedging)
Bolt, bar and metal cutters
Metal and wood cross cut and hack saws
Rounded tip knives for cutting safety belts,
parachute straps
Vise and electrical wire cutting pliers
Access ladders (height depending on air-
craft utilizing airport)
Screwdrivers and fastener tools
Keys to aircraft compartments
- (2). Manual Shifting Tools:
Crow bar and claw tool
Grappling hook and cable (with tow hooks
mounted on front and rear of mobile
truck)
Long handled shovels
Pike pole
Sledge hammer
Plugs and crimping tools for flammable
liquid lines and tanks
- (3). Electrical or Mechanical Tools (May be
mounted on separate Auxiliary Unit*):
Electrical, circular metal cutting saw
Electrical, push-pull metal cutting saw
Electrical lighting plant with generator
Portable public address system with bat-
teries
Power winch or crane
- (4). First Aid Equipment (May be mounted on
separate Auxiliary Unit)
First aid fire extinguishers
First aid medical kit
Asbestos and wool blankets
Stretchers
Resuscitator

308. The following fire fighters' personal equipment is the minimum recommended:

- (a). Bunkens suit with heat insulative interliners for
coat and trousers to afford full arm, body and leg

* See Appendix "B."



Typical Protective Suit
(Par. 308)

protection, outer garment to be water repellent and flame resistant.

- (b). Protective gloves of chrome leather with heat insulative interliner and gauntlet wrist protection.
- (c). Standard fireman boots with wool lining.
- (d). Firemen helmet with plastic full vision face shield and front and neck protective aprons.

309. Fire trailers and "Jeep" trucks ($\frac{1}{4}$ ton) are desirable accessory units to supplement the equipment specified in paragraph 307. Their main function is to reach accident sites quickly, particularly where terrain conditions make access difficult for larger units of equipment. Such trucks might carry small amounts of extinguishing agents for attacking incipient fires plus power tools, a lighting plant, access ladders, winches, a first aid kit and similar equipment. (See paragraph 307. (f.) (3) and (4) and Appendix "B".)

310. Water tank trucks are desirable auxiliary units, particularly where water supplies on and around the airport are limited. Such tank trucks should be equipped with a pumping engine and hose for relaying water to major pieces of rescue and fire fighting equipments or for direct application on the fire. Foam supplies and combination foam, "fog-foam", and water spray nozzles might also be carried.

311. No attempt is made in these recommendations to detail water pump capacities, pump inlet and outlet plumbing, power take-offs, foam proportioners and controls, the location of elevated nozzles and their operations, hose reel location, hose sizes and length, cab and manpower carrying facilities and similar equipment details,* although, they are all items requiring careful engineering and design. Basically such equipment will be related to the extinguish-

*See NFPA "Specifications for Motor Fire Apparatus." (NFPA No. 19) for reference data.

ing media used, the production rates specified in Table No. 1 and the manpower needed to place the vehicle in full operation. Wherever possible, optimum benefits are normally achieved with mobile equipment by approaching an aircraft fire from the windward position but this is not always possible.* This dictates that turrets and hand lines should be so located and operable to be efficient in any position (or any angle of vehicle approach) to avoid any waste of time (turrets operable 360° and hand lines on reels or hose bed). Ground sweep protection (discharging foam under the front bumper of the vehicle) is desirable.

312. The provision of underground water service mains with flush type hydrants along aprons and in front of administration and service areas is recommended. Underground water service mains for the movement area are also desirable wherever economically feasible. The construction of ramps, cisterns, docks, etc., to permit utilization and access to natural water sources available should not be overlooked.

313. All aircraft rescue and fire fighting vehicles should be painted red in accordance with "Army-Navy-Civil Uniform Requirements for the Marking of Vehicles Used on Landing Areas."† This requirement applies in the United States only, but international adoption is recommended.

314. *During all operational flight periods of transport category aircraft, the principal†† aircraft rescue and fire fighting unit should be driver manned, equipped with two-way radio on airport control radio station frequency, and should normally be located where maximum practicable access and observation can be obtained of the operational runways. At airports operating personal aircraft exclusively, the provision for an alert unit and driver should be optional with aircraft operators utilizing the airport.* It must be emphasized that the entire purpose and function of the fire defense organization established by these recommendations will be defeated if the equipment specified is not available for *immediate action* the moment an accident occurs. Since all accidents cannot be anticipated, the need for an alert unit is obvious. Supplementary mobile equipment garaged at a central station should be provided with an assigned driver for each such unit. This central station

* See paragraph 104.

† See Technical Standard Order N4 (July 2, 1947) available from the Civil Aeronautics Administration, Washington 25, D. C., U.S.A.

†† The "principal" unit is defined as the unit designated as the first major unit to be employed.

should be heated (where necessary) to assure immediate starting of garaged vehicles and should be located so:

- (a). That access to the movement area is unobstructed.
- (b). That vehicle running distance to active runways is the shortest possible consistent with local regulations regarding clearances of structures from landing areas.
- (c). That visibility of flight activity is normally obtainable.
- (d). That auxiliary personnel, trained for aircraft rescue and fire fighting, will be able to reach their stations without unnecessary delay.
- (e). That direct communication with Airport Control be available.

315. It is recommended that full crews (including auxiliaries) man the equipment and that this equipment be placed at predetermined emergency stations on the movement area prior to any landing or take-off under any abnormal flight or weather conditions which might increase the accident potential during such operations.

Movement and utilization of aircraft rescue and fire fighting equipment and of other emergency equipment at the time of emergency should be governed by the principles set forth in NFPA pamphlet "Suggested Standard Operating Procedures, Aircraft Rescue and Fire Fighting." (NFPA No. 402.)*

316. Personnel recommendations are as follows:

- (a). *Sufficient trained aircraft rescue and fire fighting personnel (Emergency Crew) should be available during all periods of flight operations to bring into immediate employment at least one-third of the total extinguishing media specified or a minimum of one unit of equipment, whichever is the greater. This contemplates that the principal† aircraft rescue and fire fighting unit can be fully manned with full-time and auxiliary personnel within 30 seconds of an alarm and that each additional unit of equipment has a full-time driver assigned. Other trained auxiliary personnel should be available to complete these additional vehicle manning requirements. Table No. 1 (page 13) may be used*

* Available from the Association.

† The "principal" unit is defined as that unit designated as the first major unit to be employed.

as a guide in the interpretation of these recommendations.

- (b). It is recommended that structural fire fighters (where available), personnel of tenants and users of the airport, as well as airport employees be trained as auxiliaries.
- (c). All full-time or auxiliary trained personnel (Emergency Crew) provided for aircraft rescue and fire fighting duties should be fully schooled in the performance of their duties under the direction of a designated Chief of Emergency Crew. This involves particularly expert knowledge of:
 - 1. The capabilities and limitations of their mobile and auxiliary aircraft rescue and fire fighting equipment and thorough familiarity with procedures recommended for their operation and for the accomplishment of their mission.
 - 2. The physical features of the aircraft operating on the airport particularly as to the location of:
 - Crew and passenger seats
 - Entry and exit facilities and emergency exit equipment
 - Forceable entry areas
 - Fuel tanks, fuel shut-off controls, fuel line drainage points, fuel filler caps
 - Battery locations and battery master switches
 - Lubricating oil tanks and shut-off valves
 - Hydraulic fluid tanks and shut-off valves
 - De-icer tanks
 - Baggage compartment areas
 - Fire extinguishing systems and controls
 - Fire extinguisher locations
 - Heater locations and controls
 - 3. The behavior of fuel vapors and flammable liquids and their control and extinguishment under conditions encountered in aircraft accidents. Knowledge of aircraft fuel system construction is important in this connection.
 - 4. The methods of preventing fire following aircraft accidents where fire does *not* initially occur.

5. Medical first aid and the proper manner of handling injured personnel to avoid infliction of additional suffering or injury in extricating trapped occupants from crashed aircraft.
6. Flight patterns and operational practices on the airport and airspace, including knowledge of ground flight obstructions and airport topography.

317. Full-time emergency crewmen should be assigned airport fire prevention duties (inspections and fire-guard functions) and be responsible for the maintenance of all airport fire equipment but should not be given janitorial or labor duties outside their quarters or field of service.

318. The utility of and requirements for aircraft rescue and fire fighting equipment should also take into consideration such local factors as:

- a. Aircraft storage practices, quantity of aircraft stored, and the inherent hazards associated therewith.
- b. Aircraft maintenance activities, facilities and inherent hazards associated therewith.
- c. Installed fire protective equipment provided for aircraft hangars and aircraft repair and storage buildings.
- d. Gasoline handling and storage practices and the inherent hazards associated therewith.
- e. Frequency of adverse weather conditions which might effect the number of emergency landings and the radio and radar landing aids provided.
- f. The availability of suitably organized and equipped public protective agencies available for assistance and aid to the airport fire defense organization.
- g. Flight obstructions and hazards surrounding the airport.
- h. The value of the real property investments on the airport.

319. Each operation of aircraft rescue and fire fighting equipment should be carefully reported and analyzed and one copy of each such report should be sent to the National Fire Protection Association, 60 Batterymarch St., Boston 10, Mass. The form reproduced in Appendix "E" is the Official Report of the Association and full size copies are available from the NFPA.

APPENDIX "A"

Tires for Aircraft Rescue and Fire Fighting Equipment
Maximum Recommended Loads at 25 Pounds Inflation

A Tire and Rim Association Standard

Tire Size	Ply Rating	Load at 25 PSI	Tire Size	Ply Rating	Load at 25 PSI
6.50-17	6	1000	11.00-24	12	2740
6.50-18	6	1050	12.00-20	14	2780
6.50-20	6	1130	12.00-22	14	2940
7.00-17	8	1115	12.00-24	14	3120
7.00-18	8	1165	13.00-20	16	3300
7.00-20	8	1260	13.00-24	16	3700
7.50-17	8	1260	14.00-20	18	3880
7.50-18	8	1320	14.00-24	18	4320
7.50-20	8	1420			
8.25-18	10	1530	16.00-20	10	5125
8.25-20	10	1660	16.00-24, 25	12	5675
9.00-18	10	1850	16.00-28, 29	12	6300
9.00-20	10	1970	16.00-32, 33	12	6800
10.00-18	12	2060	18.00-24, 25	16	7325
10.00-20	12	2190	18.00-29	16	8025
10.00-22	12	2340	18.00-32, 33	16	8700
10.00-24	12	2490	21.00-24, 25	16	9400
11.00-20	12	2460	21.00-29	16	10200
11.00-22	12	2600	21.00-33	16	11000

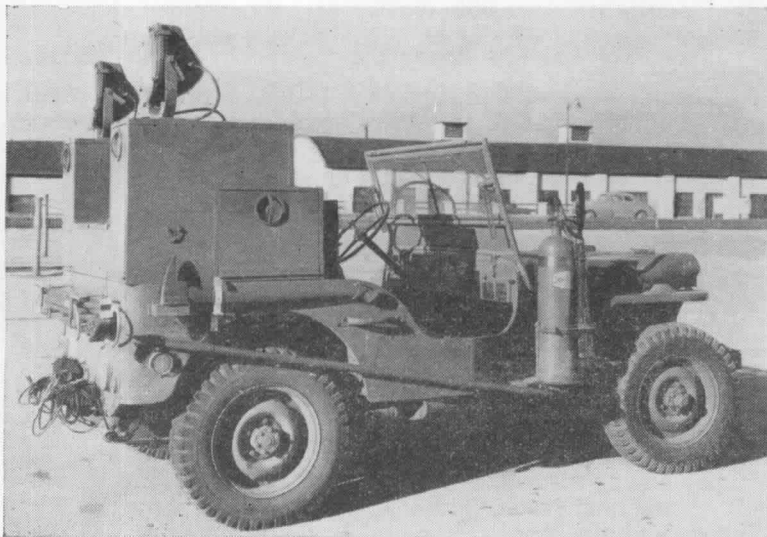
APPENDIX "B"

Recommended Specifications for Quarter Ton Auxiliary, Four Wheel Drive Aircraft Rescue and Fire Fighting Unit

This auxiliary vehicle is recommended for any airport aircraft rescue and fire fighting organization. The basic requirement for this auxiliary is that it be capable of reaching any potential crash site on the movement area of the airport within 90 seconds under all normal operating conditions.

It should be equipped with such extinguishing agents that it might be useful in holding an incipient fire in check pending the arrival of the major units of rescue and fire fighting equipment and, therefore, would be particularly useful if used to haul a fire fighting trailer (i.e. carbon dioxide or dry chemical cylinders or tanks, water tank with foam supplies and tank*) but the specifications given below do not include such a trailer.

* See paragraph 209.

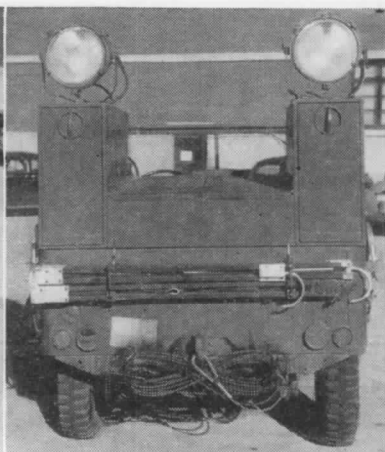


Photographs of Quarter-Ton Auxiliary Aircraft Rescue and Fire Fighting Unit

Photo courtesy U.S.A.F.



Front View Showing Winch

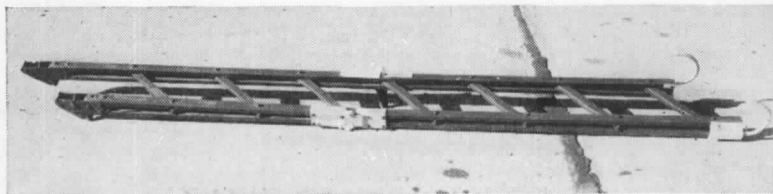


Rear View Showing Grappling Cable

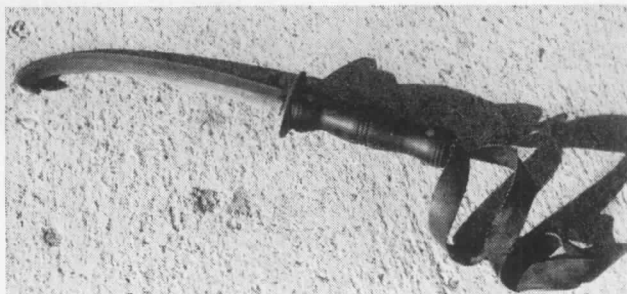
1. Truck, $\frac{1}{4}$ ton, 4 x 4, Willys-Overland "Jeep" or equivalent.
2. Generator, 3KW, 110 Volt, D.C. with power take-off or larger (depending upon electrical accessories used).
3. Floodlights, two 500 Watt.
4. Radio, for 2-way with Airport Control Radio.
5. Siren, electric.
6. Electrical extension cord reel, 100 ft., number 10 gauge, rubber covered, two wire conductor cord, connected to explosion-proof outlet plug.
7. Saw, electric, circular, metal cutting.
8. Saw, electric, push-pull. metal cutting.
9. Tools, manual.

<ul style="list-style-type: none"> a. Axes, non-wedging, metal cutting b. Bar, wrecking, gooseneck, $\frac{3}{4}$" x 30" c. Bolt and cable cutter d. Hammers, ballpeen and sledge *e. Hatchet, $3\frac{5}{8}$" edge f. Keys, aircraft compartment *g. Knives, rescue, rounded tip 	<ul style="list-style-type: none"> *h. Pliers, wire cutting, lineman i. Pole, pike j. Saws, hand, metal cutting *k. Screwdrivers, 6", 8" and fastener tools l. Shears, metal m. Shovel, long handled n. Snips, tinner's o. Wrenches, various sizes
--	--

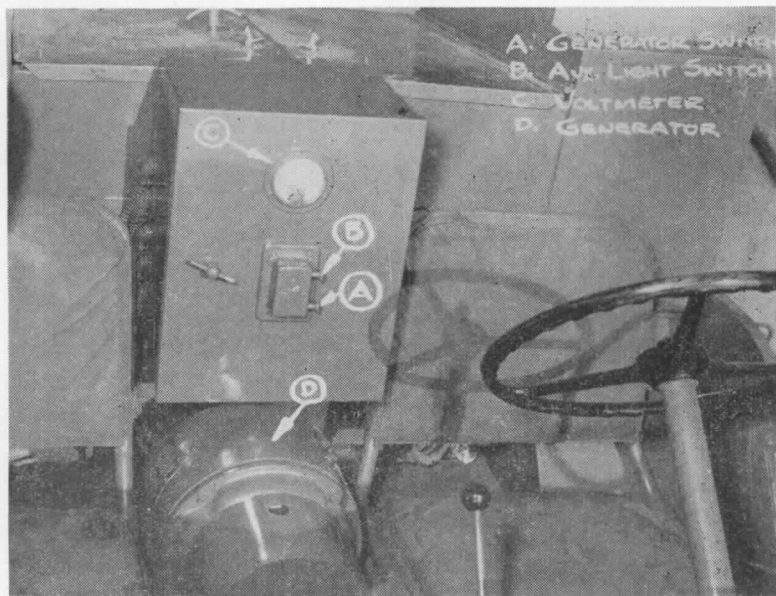
* To be in belt for rescue personnel.



Collapsible Ladder Opening Sideways



Harness
Cutting
Knife



Front Seat Showing Generator and Auxiliary Equipment as Labeled

10. Ladder, folding, minimum 10 ft. when extended, longer if required by aircraft operating at the airport.
11. Grappling hook with 50 ft. of flexible wire cable on reel, truck mounted.
12. Flashlights, three, explosion-proof.
13. Plugs, synthetic rubber, fuel line (various sizes).
14. Fire extinguishers, two 15 lb. carbon dioxide or two 20 lb. dry chemical and one 2½ gallon foam as minimum (exclusive of trailer unit).
15. Trailer hitch.

APPENDIX "C"

The following is interpreted from publications issued by the International Civil Aviation Organization:

Aerodrome: A defined area on land or water (including any buildings, installations and equipment) intended to be used either wholly or in part for the arrival, departure, movement and servicing of aircraft.

Aircraft: Any machine that can derive support in the atmosphere from the reactions of the air.

Airport: An aerodrome at which facilities have, in the opinion of the State authorities, been sufficiently developed to be of importance to civil aviation.

Airport Control: A service established to provide air traffic control for airports.

Air Traffic: All aircraft in flight or operating in the air-space and on the movement area of an airport.

Landing Area: That part of the movement area intended for landing and take-off run of aircraft.

Movement Area: That part of an aerodrome intended for the movement of aircraft.

The following definitions are added to clarify the foregoing text. These definitions are promulgated by the NFPA Committee: